



# MONTHLY MEMBERSHIP PROGRESS REPORT

District 13 OH4

Results as of: 04/30/2018

GMT: CINDY GREGG

LOCATION OHIO

GMT CA

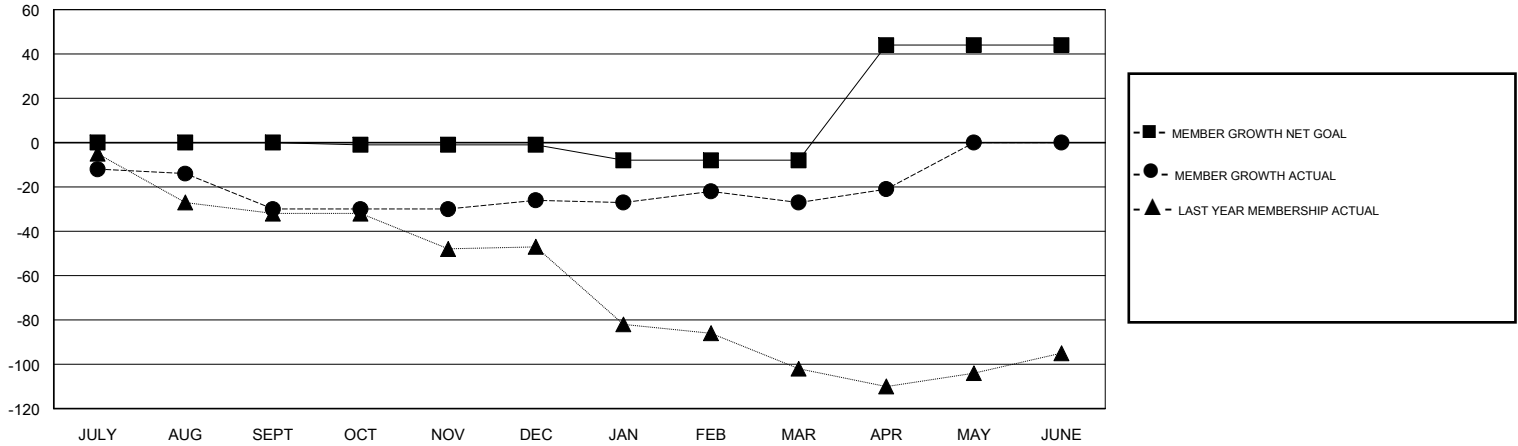
Clubs			
RESULTS FOR 2017-2018			
QUARTER	NEW CLUB GOAL	NEW CLUBS	DROPPED CLUBS
JULY/AUG/SEPT	0	0	0
OCT/NOV/DEC	0	0	0
JAN/FEB/MAR	0	0	0
APR/MAY/JUNE	1	0	0

Members			
RESULTS FOR 2017-2018			
QUARTER	MEMBER GROWTH NET GOAL	MEMBER GROWTH ACTUAL	DROPPED MEMBERS ACTUAL (including transfers)
JULY/AUG/SEPT	0	23	48
OCT/NOV/DEC	-1	34	29
JAN/FEB/MAR	-7	32	29
APR/MAY/JUNE	52	18	11

GOALS AND ACTUAL NEW CLUBS CUMULATIVE



GOALS AND ACTUAL MEMBERS CUMULATIVE



DROPPED CLUBS: 0	31 CLUBS OF 61 ADDED 1 OR MORE NEW MEMBERS	<u>GENDER DISTRIBUTION</u> MALE 1,104 (68.15%) FEMALE 516 (31.85%) Women Percentage Fiscal Year Goal: 31%
<u>DROPPED MEMBERS</u> DECEASED 24 CLUB CANCELLED 0 OTHER 93 TOTAL 117	<a href="#">CLICK HERE FOR CUMULATIVE MEMBERSHIP DATA</a>	TOTAL FAMILY UNIT MEMBERS 276 FAMILY MEMBERS PAYING HALF DUES 141